



Wrapping Machines
Models SE-US-0533-D, 0533-T
Items 14430, 14431
Instruction Manual



Revised - 03/09/2023



Toll Free: 1-800-465-0234
Fax: 905-607-0234
Email: service@omcan.com
www.omcan.com



Table of Contents

Model SE-US-0533-D / Model SE-US-0533-T

Section	Page
General Information -----	3 - 4
Safety and Warranty -----	4 - 5
Technical Specifications -----	6
Installation -----	6
Operation -----	7
Parts Breakdown -----	8 - 9
Electrical Schematics -----	10
Warranty Registration -----	11



General Information

Omcan Manufacturing and Distributing Company Inc., Food Machinery of America, Inc. dba Omcan and Omcan Inc. are not responsible for any harm or injury caused due to any person's improper or negligent use of this equipment. The product shall only be operated by someone over the age of 18, of sound mind, and not under the influence of any drugs or alcohol, who has been trained in the correct operation of this machine, and is wearing authorized, proper safety clothing. Any modification to the machine voids any warranty, and may cause harm to individuals using the machine or in the vicinity of the machine while in operation.

CHECK PACKAGE UPON ARRIVAL

Upon receipt of an Omcan shipment please inspect for external damage. If no damage is evident on the external packaging, open carton to ensure all ordered items are within the box, and there is no concealed damage to the machine. If the package has suffered rough handling, bumps or damage (visible or concealed), please note it on the bill of lading before accepting the delivery and contact Omcan within 24 hours, so we may initiate a claim with the carrier. A detailed report on the extent of the damage caused to the machine must be filled out within three days, from the delivery date shown in the shipping documents. Omcan has no recourse for damaged products that were shipped collect or third party.

Before operating any equipment, always read and familiarize yourself with all operation and safety instructions.

Omcan would like to thank you for purchasing this machine. It's of the utmost importance to save these instructions for future reference. Also save the original box and packaging for shipping the equipment if servicing or returning of the machine is required.

Omcan Fabrication et distribution Compañie Limité et Food Machinery d'Amérique, dba Omcan et Omcan Inc. ne sont pas responsables de tout dommage ou blessure causé du fait que toute personne ait utilisé cet équipement de façon irrégulière. Le produit ne doit être exploité que par quelqu'un de plus de 18 ans, saine d'esprit, et pas sous l'influence d'une drogue ou d'alcool, qui a été formé pour utiliser cette machine correctement, et est vêtu de vêtements de sécurité approprié. Toute modification de la machine annule toute garantie, et peut causer un préjudice à des personnes utilisant la machine ou des personnes à proximité de la machine pendant son fonctionnement.

VÉRIFIEZ LE COLIS DÈS RÉCEPTION

Dès réception d'une expédition d'Omcan veuillez inspecter pour dommages externes. Si aucun dommage n'est visible sur l'emballage externe, ouvrez le carton afin de s'assurer que tous les éléments commandés sont dans la boîte, et il n'y a aucun dommage dissimulé à la machine. Si le colis n'a subi aucune mauvaises manipulations, de bosses ou de dommages (visible ou cachée), notez-le sur le bond de livraison avant d'accepter la livraison et contactez Omcan dans les 24 heures qui suivent, pour que nous puissions engager une réclamation auprès du transporteur. Un rapport détaillé sur l'étendue des dommages causés à la machine doit être rempli dans un délai de trois jours, à compter de la date de livraison indiquée dans les documents d'expédition. Omcan n'a aucun droit de recours pour les produits endommagés qui ont été expédiés ou cueilli par un tiers transporteur.

General Information

Avant d'utiliser n'importe quel équipement, toujours lire et vous familiariser avec toutes les opérations et les consignes de sécurité.

Omcan voudrais vous remercier d'avoir choisi cette machine. Il est primordial de conserver ces instructions pour une référence ultérieure. Également conservez la boîte originale et l'emballage pour l'expédition de l'équipement si l'entretien ou le retour de la machine est nécessaire.

Omcan Empresa De Fabricacion Y Distribucion Inc. Y Maquinaria De Alimentos De America, Inc. dba Omcan y Omcan Inc. no son responsables de ningun daño o perjuicio causado por cualquier persona inadecuada o el uso descuidado de este equipo. El producto solo podra ser operado por una persona mayor de 18 años, en su sano juicio y no bajo alguna influencia de droga o alcohol, y que este ha sido entrenado en el correcto funcionamiento de esta máquina, y ésta usando ropa apropiada y autorizada. Cualquier modificación a la máquina anula la garantía y puede causar daños a las personas usando la máquina mientras esta en el funcionamiento.

REVISE EL PAQUETE A SU LLEGADA

Tras la recepcion de un envio Omcan favor inspeccionar daños externos. Si no hay daños evidentes en el empaque exterior, Habra el carton para asegurarse que todos los articulos solicitados estén dentro de la caja y no encuentre daños ocultos en la máquina. Si el paquete ha sufrido un manejo de poco cuidado, golpes o daños (visible o oculto) por favor anote en la factura antes de aceptar la entrega y contacte Omcan dentro de las 24 horas, de modo que podamos iniciar una reclamación con la compañía. Un informe detallado sobre los daños causados a la máquina debe ser llenado en el plazo de tres días, desde la fecha de entrega que se muestra en los documentos de envío. Omcan no tiene ningun recurso por productos dañados que se enviaron a recoger por terceros.

Antes de utilizar cualquier equipo, siempre lea y familiarizarse con todas las instrucciones de funcionamiento y seguridad.

Omcan le gustaría darle las gracias por la compra de esta máquina. Es de la mayor importancia para salvar estas instrucciones para futuras consultas. Además, guarda la caja original y el embalaje para el envío del equipo si servicio técnico o devolución de la máquina que se requiere.

Safety and Warranty

WARNING

PLEASE READ THE USER MANUAL CAREFULLY BEFORE OPERATING THE MACHINE

When using electrical appliances, safety precautions should always be followed including:

1. Read all instructions before using this wrapping machine.
2. To protect against risk of electrical shock, do not put the cord, plug, or base in water or any other liquid.
3. Supervision is necessary when the appliance is in use or near children.



Safety and Warranty

4. The machine must put on a stable, flat working area. CAUTION: To reduce risk of injury from an unstable unit, use the stabilizer before the drawer is extended.
5. Unplug the machine from the outlet when not in use. Unplug the machine before assembly or disassembly and before cleaning or maintenance.
6. Do not touch moving parts.
7. Don't operate the appliance if there is a damaged cord or plug. If the appliance malfunctions, or is dropped or damaged in any manner, turn off the machine immediately and unplug it from the socket. Call our toll-free customer service number for information on examination, electrical repair, mechanical repair, or adjustment.
8. Do not immerse in water. Don't use outdoors.
9. Don't let cord hang over edges of a table or counter. Do not let the machine touch hot surfaces.
10. Keep hands and clothing away from the hot plate and heat box. Don't touch areas with clothing to avoid burning them.
11. Don't use the switch or power plug with wet hands or clothing.
12. Don't have combustible substances around the equipment.
13. Ensure the proper connection of the grounding wire.
14. When finished using the machine, unplug the machine but never pulling on the wire.
15. COMMERCIAL USE ONLY.

RESIDENTIAL USERS: Vendor assumes no liability for parts or labor coverage for component failure or other damages resulting from installation in non-commercial or residential applications. The right is reserved to deny shipment for residential usage; if this occurs, you will be notified as soon as possible.

1 YEAR PART AND LABOUR BENCH WARRANTY

Within the warranty period, contact Omcan Inc. at 1-800-465-0234 to schedule a drop off to either an Omcan authorized service depot in the area, or to an Omcan Service warehouse to repair the equipment.

Unauthorized maintenance will void the warranty. Warranty covers electrical and part failures, not improper use.

Please see <https://omcan.com/disclaimer> for complete info.

WARNING:

The packaging components are classified as normal solid urban waste and can therefore be disposed of without difficulty.

In any case, for suitable recycling, we suggest disposing of the products separately (differentiated waste) according to the current norms.

DO NOT DISCARD ANY PACKAGING MATERIALS IN THE ENVIRONMENT!

Technical Specifications

Model	SE-US-0533-D	SE-US-0533-T
Type	Two-Roll Capacity with Mounting Axles	Three-Roll Capacity with Mounting Axles
Stretch Film	18" / 457mm maximum width	
Hot Plate	6" x 15" / 152 x 380mm	
Electrical	110-120V / 60Hz / 1	
Weight	43 lbs. / 19.5 kgs.	44 lbs. / 20 kgs.
Packaging Weight	45 lbs. / 20 kgs.	46 lbs. / 20.9 kgs.
Dimensions	22.3" x 26" x 18.5" / 572 x 660 x 470mm	
Packaging Dimensions	30" x 26" x 20" / 760 x 660 x 510mm	
Item Number	14430	14431

Installation

FILM CORE AXLE LOADING AND REPLACEMENT

Installing complete axle assembly

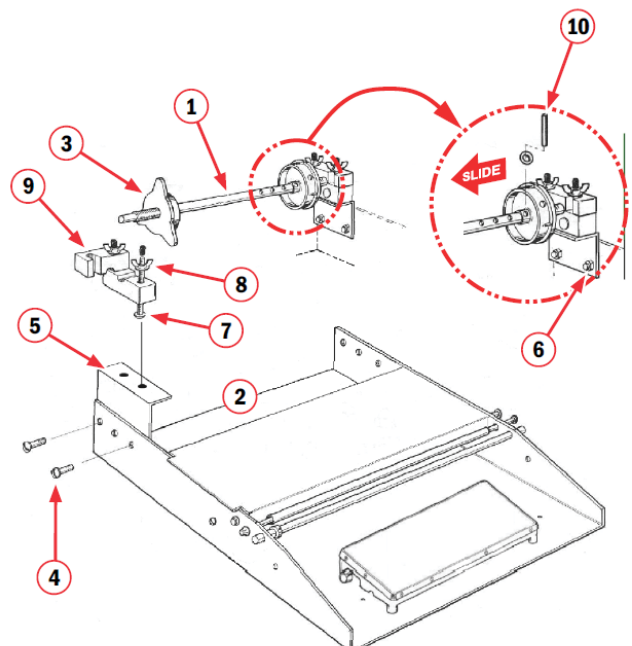
- To install the assembly (1), simply position the assembly at the rear of the machine (2) with the removable end cap (3) on the left side.
- Insert two bolts (4) on each side through the machine base (2) and bearing block plates (5), slide on washers and fasten washers with hex nuts (6).

Replacing the individual axle

- To replace the axle, remove cap from end of one bolt (7) and unscrew wing nut (8), then pull screw from bearing block (9) and open to release the axle assembly, replace axle assembly with removable cap.

Loading and adjusting axle for different width films

- Loosen the wing nuts and swing out upper bearing blocks on both sides.
- Lift out the axle assembly, unscrew the movable end cap and position fixed cap for film size being used and secure with pin and o-ring (10).
- Place the core of the film against the fixed cap and feed film from bottom of roll.
- Replace the movable end cap and screw tightly into film core.
- Replace the axle back into bearing blocks and then tighten wing nuts to desired film tension.



CHECKING FUSE

- With the power OFF, disconnect red wire from Terminal 1 and secure it out of the way without touching any metal.
- With power ON, test across Terminal 3 and 4. If tester does not light, replace fuse.

CHECKING HOT ROD

- With the power OFF, disconnect red wire from Terminal 1 and secure it out of the way without touching any metal.
- With power ON, test between Terminal 1 and end of disconnected wire. If tester does not light, replace the hot rod.

Note: This unit should not be operated if rod temperature exceeds 275°F. If smoke or fumes are detected, discontinue use.

CHECKING BOARD

- With the power OFF, disconnect red wire from Terminal 1 and secure it out of the way without touching any metal.
- With power ON, test across Terminals 1 and 2. If tester does not light, replace circuit board.

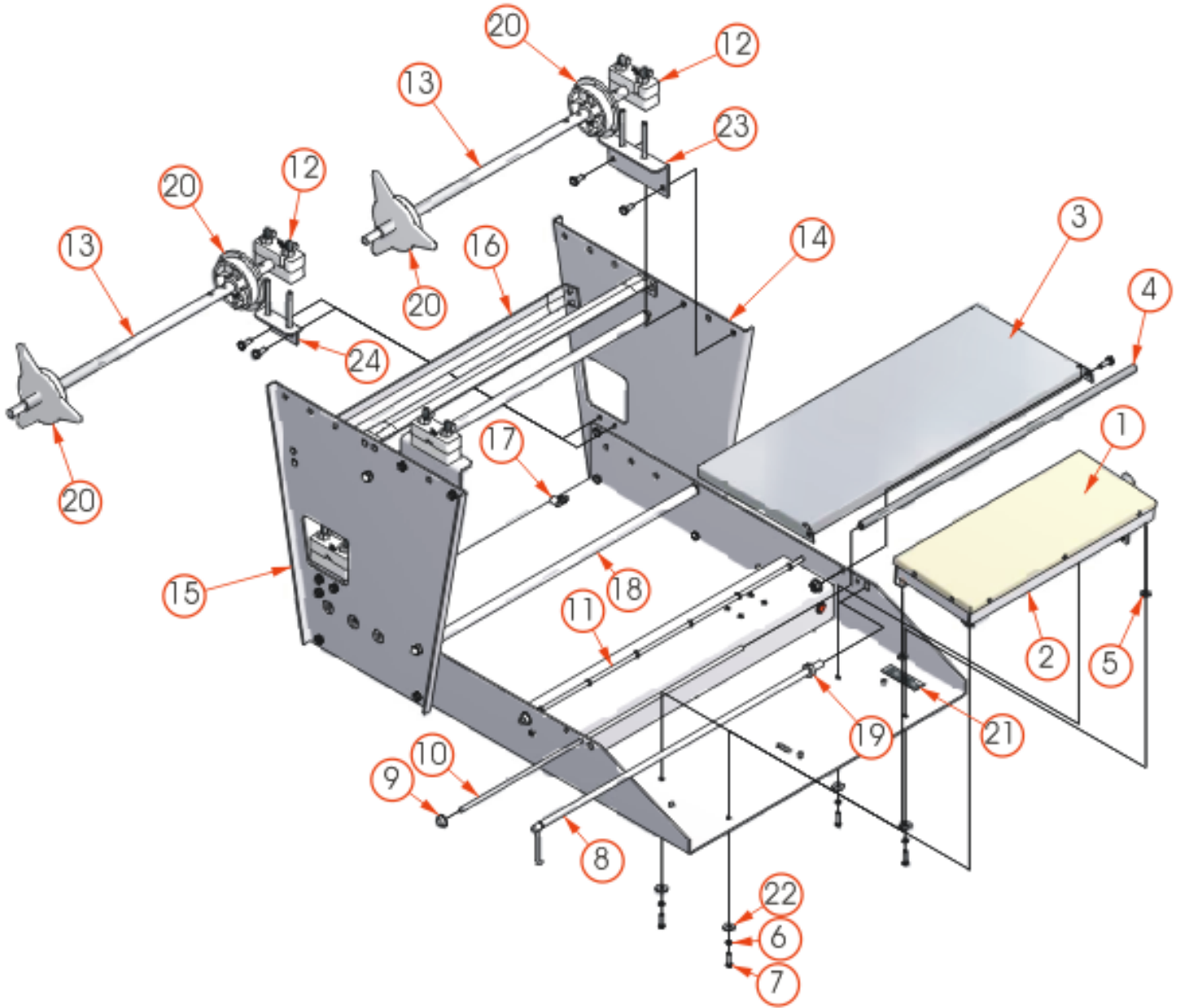
TO LOAD FILM ON WRAPPERS WITH ROLLERS

- Rest film roll on top of two rollers, centering film between the plastic guides.
- Tighten thumb screw against the film brake to ensure proper film tension.

Parts Breakdown

Model SE-US-0533-D 14430

Model SE-US-0533-T 14431





Parts Breakdown

Model SE-US-0533-D 14430

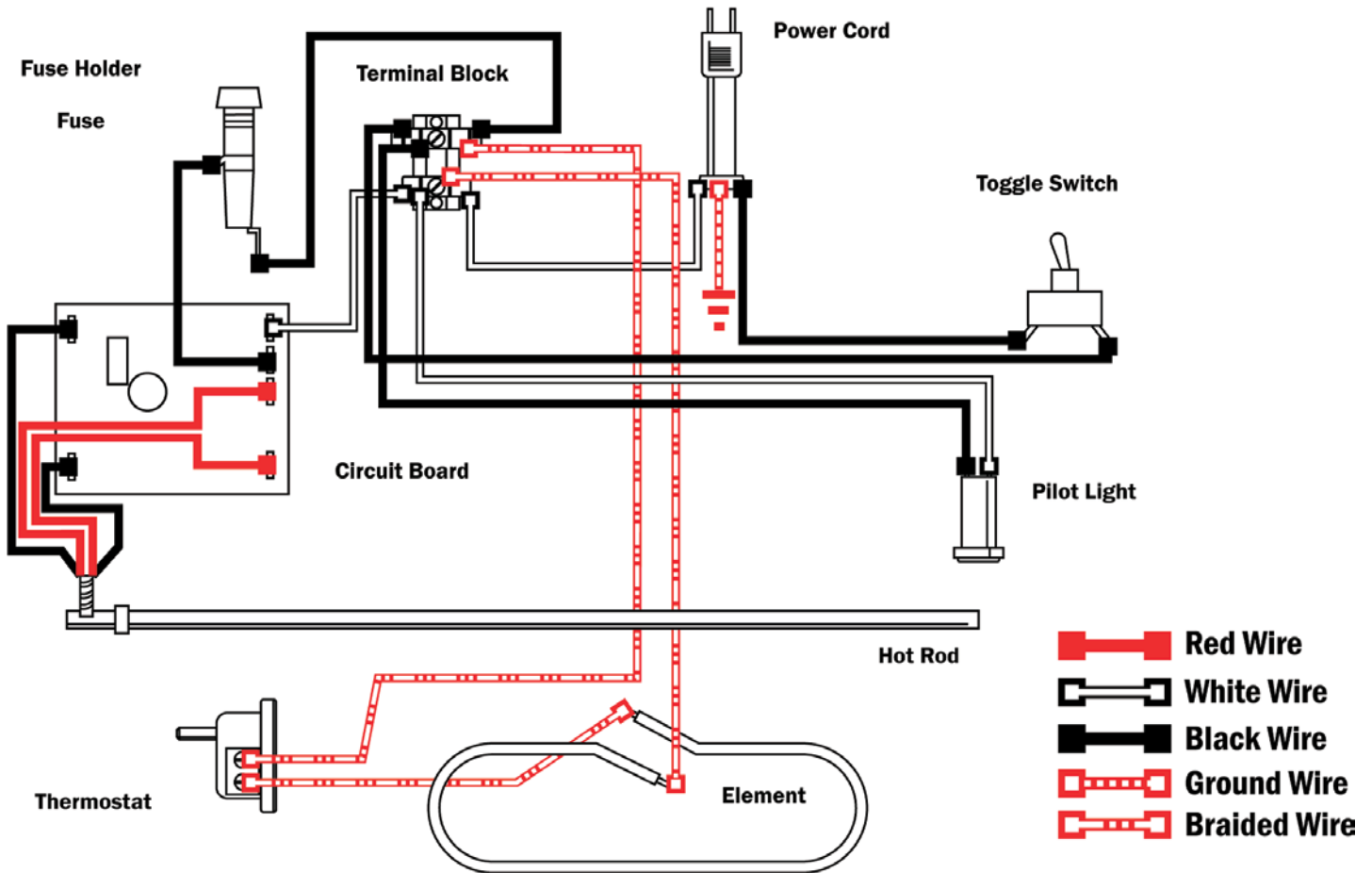
Item No.	Description	Position	Item No.	Description	Position	Item No.	Description	Position
76356	Non-Stick Cover 6" x 15" for 14430	1	76340	Shaft Retainer for 14430	9	76348	Vinyl Camp for 14430	17
76333	Hot Plate Assembly 6x15 for 14430	2	76341	Film Guide Shaft 22 3/4"-L for 14430	10	76349	Film Separator Roller for 14430	18
76334	Wrapping Bridge for 14430	3	76342	Film Guide Shaft 22 3/4"-L for 14430	11	76350	Cut-Off Rod Collar for 14430	19
76335	Film Guide Tube for 14430	4	76343	Bearing Block Set for 14430	12	76351	Film Core Adapter Kit for 14430	20
76336	Fiber Insulator Washer for 14430	5	76344	Film Core Axle 21 15/16"-L for 14430	13	76352	Hi-Lo Decal for 14430	21
76337	Lock Washer for 14430	6	76345	Right Hand Side Plate for 14430	14	76353	No-10 Flat Washer for 14430	22
76338	Hex Head Cap Screw for 14430	7	76346	Left Hand Side Plate for 14430	15	76354	Bearing Block Support Bracket for 14430	23
76339	Cut-Off Hot Rod 23"-L for 14430	8	76347	Support Bracket for 14430	16	76355	Bearing Block Support Bracket for 14430	24

Model SE-US-0533-T 14431

Item No.	Description	Position	Item No.	Description	Position	Item No.	Description	Position
76356	Non-Stick Cover 6" x 15" for 14431	1	76364	Shaft Retainer for 14431	9	76372	Vinyl Camp for 14431	17
76333	Hot Plate Assembly 6x15 for 14431	2	76365	Film Guide Shaft 22 3/4"-L for 14431	10	76373	Film Separator Roller for 14431	18
76358	Wrapping Bridge for 14431	3	76366	Film Guide Shaft 22 3/4"-L for 14431	11	76374	Cut-Off Rod Collar for 14431	19
76359	Film Guide Tube for 14431	4	76367	Bearing Block Set for 14431	12	76375	Film Core Adapter Kit for 14431	20
76360	Fiber Insulator Washer for 14431	5	76368	Film Core Axle 21 15/16"-L for 14431	13	76376	Hi-Lo Decal for 14431	21
76361	Lock Washer for 14431	6	76369	Right Hand Side Plate for 14431	14	76377	No-10 Flat Washer for 14431	22
76362	Hex Head Cap Screw for 14431	7	76370	Left Hand Side Plate for 14431	15	76378	Bearing Block Support Bracket for 14431	23
76363	Cut-Off Hot Rod 23"-L for 14431	8	76371	Support Bracket for 14431	16	76379	Bearing Block Support Bracket for 14431	24

Electrical Schematics

Model CE-TW-0250 11385



NEMA
5 - 15P
125VAC / 15 AMP



Warranty Registration

Thank you for purchasing an Omcan product. To register your warranty for this product, complete the information below, tear off the card at the perforation and then send to the address specified below. You can also register online by visiting:

Merci d'avoir acheté un produit Omcan. Pour enregistrer votre garantie pour ce produit, complétez les informations ci-dessous, détachez la carte au niveau de la perforation, puis l'envoyer à l'adresse spécifiée ci-dessous. Vous pouvez également vous inscrire en ligne en visitant:

Gracias por comprar un producto Omcan usted. Para registrar su garantía para este producto, complete la información a continuación, cortar la tarjeta en la perforación y luego enviarlo a la dirección indicada a continuación. También puede registrarse en línea en:

<https://omcan.com/warranty-registration/>

For mailing in Canada

Pour postale au Canada

Por correo en Canadá

For mailing in the US

Pour diffusion aux États-Unis

Por correo en los EE.UU.

OMCAN

PRODUCT WARRANTY REGISTRATION

3115 Pepper Mill Court,

Mississauga, Ontario

Canada, L5L 4X5

OMCAN

PRODUCT WARRANTY REGISTRATION

4450 Witmer Industrial Estates, Unit 4,

Niagara Falls, New York

USA, 14305

or email to: service@omcan.com



Purchaser's Information

Name: _____

Address: _____

City: _____ Province or State: _____ Postal or Zip: _____

Country: _____

Dealer from which Purchased: _____

Dealer City: _____ Dealer Province or State: _____

Invoice: _____

Company Name: _____

Telephone: _____

Email Address: _____

Type of Company:

Restaurant Bakery Deli

Butcher Supermarket Caterer

Institution (*specify*): _____

Other (*specify*): _____

Model Name: _____ Model Number: _____ Serial Number: _____

Machine Description: _____

Date of Purchase (MM/DD/YYYY): _____ Date of Installation (MM/DD/YYYY): _____

Would you like to extend the warranty? Yes No

Thank you for choosing Omcan | Merci d'avoir choisi Omcan | Gracias por elegir Omcan



Since 1951 Omcan has grown to become a leading distributor of equipment and supplies to the North American food service industry. Our success over these many years can be attributed to our commitment to strengthen and develop new and existing relationships with our valued customers and manufacturers. Today with partners in North America, Europe, Asia and South America, we continually work to improve and grow the company. We strive to offer customers exceptional value through our qualified local sales and service representatives who provide convenient access to over 6,500 globally sourced products.

Depuis 1951 Omcan a grandi pour devenir un des “leaders” de la distribution des équipements et matériel pour l’industrie des services alimentaires en Amérique du Nord. Notre succès au cours de ces nombreuses années peut être attribué à notre engagement à renforcer et à développer de nouvelles et existantes relations avec nos clients et les fabricants de valeur. Aujourd’hui avec des partenaires en Amérique du Nord, Europe, Asie et Amérique du Sud, nous travaillons continuellement à améliorer et développer l’entreprise. Nous nous efforçons d’offrir à nos clients une valeur exceptionnelle grâce à nos ventes locales qualifiées et des représentants de service qui offrent un accès facile à plus de 6500 produits provenant du monde entier.

Desde 1951 Omcan ha crecido hasta convertirse en un líder en la distribución de equipos y suministros de alimentos en América del Norte industria de servicios. Nuestro éxito en estos años se puede atribuir a nuestro compromiso de fortalecer y desarrollar nuevas relaciones existentes con nuestros valiosos clientes y fabricantes. Hoy con socios de América del Norte, Europa, Asia y América del Sur, que trabajan continuamente para mejorar y crecer la empresa. Nos esforzamos por ofrecer a nuestros clientes valor excepcional a través de nuestro local de ventas y representantes de los servicios que proporcionan un fácil acceso a más de 6,500 productos con origen a nivel mundial.

